

## Friendship Star Quilters May 2025

P.O. Box 8051, Gaithersburg, MD 20898  
Website: [friendshipstar.org](http://friendshipstar.org)

# The Quiltline

Calendar of Events	
<b>May 3</b>	<b>Airing of the Quilts</b> Palmerton, PA ( <a href="#">more information</a> )
<b>May 5</b>	<b>FSQ Guild Meeting – 7:30 pm **</b> Asbury Methodist Village, <b>Rosborough Center</b> 301 Odendhal Ave, Gaithersburg, MD
<b>June 13-14</b>	<b>Quilts by the Bay – Annapolis Quilt Guild</b> 10 am – 4 pm Riva Trace Baptist Church 475 W. Central Ave. Davidsonville, MD 21035

**Fabric Raffle** – Fat quarters of **red colors or prints**

Guild Meetings	Service Projects
<p>Guild meetings are usually held at 7:30 pm on the 1<sup>st</sup> Monday of the month. In April we will meet at</p> <p>Asbury Methodist Village Rosborough Center 301 Odendhal Ave. Gaithersburg, MD</p> <p><b>** Join us at 7:00 pm for mingling and conversation</b></p> <p><b>If Montgomery County Public Schools (MCPS) evening activities are cancelled, FSQ meetings are cancelled.</b> Check <a href="http://montgomeryschoolsmd.org">montgomeryschoolsmd.org</a>.</p>	<p>Workshops are held from 9:30 am to Noon at</p> <p>Fairhaven United Methodist Church 12801 Darnestown Rd Darnestown, MD 20878</p> <p><b>Workshops this month:</b></p> <p>Thursday, May 15<sup>th</sup> Thursday, May 22<sup>nd</sup></p>

Table of Contents	Pg
FSQ Calendar & Events	1
President's Message	2
Guild Meeting Minutes	3
Programs	6
Airing of the Quilts	6
Service Projects Update	7
Where Did That Darn Block Go?	8
FSQ Quilt Show Update	9
Quilt Show Raffle Baskets and Quilt of Valor	10
Quilt Show Silent Auction	11
Quilt Show Viewers' Choice	12
Quilt Show Yard Sale	16
FSQ Retreat	17
Facebook	18
Quilt Block Exchange	18
Membership	19
A True-Blue Quilt	20
Officers & Committee Chairs	22

### Executive Board Meeting

The next Executive Board Meeting will be via Zoom on **June 9<sup>th</sup> at 7:00 pm.**

If you have a topic to bring to the board, please contact any of the officers to add your item to the agenda or to receive the Zoom link for the meeting.



## President's Message

Anne Flaggs

Hello Quilters,

Wow what a show, I hope you all enjoyed the quilt show and maybe got some inspiration or ideas on what you can work on for the next one in 2 years. As far as I can tell, everyone was having a great time at the show and enjoying all our beautiful quilts and raffles. If you have suggestions or comments on the show, please send them to me as I'm compiling a list so our show in 2027 can be even better. Thank you to all the committee chairs and volunteers, your hard work really showed through. I particularly would like to thank the husbands, children, grandchildren, boyfriends, etc. who showed up to help with take-down on Sunday; we finished in record time with all the extra hands. We will have more Quilt Show wrap-up news at the May meeting where we will also be drawing the volunteer prizes.

### Other news:

- **Our meeting in May will remain in the Rosborough community room.** I announced we were moving to a new location in Asbury last month but we have decided to stay where we are at least for the next month. We are comfortable with the AV equipment in this room and the parking is better. Our speaker in May will have a more interactive presentation and we want her program to be successful.
- Our June meeting will be a Pot Luck. A SignUpGenius list will be coming out soon so you can indicate what you would like to bring but in general we will need appetizers, main dishes, side dishes, salads and desserts. The guild will buy chicken and bottled water. It's sure to be a fun time and a chance for everyone to chat before we elect next year's officers, pull the winners of the Raffle Quilt and Featherweight and have a quick business meeting before we adjourn until August. **The Pot Luck will start 1 hour earlier at 6:30 pm** so please come hungry and come whenever you can, as there should be plenty of food to eat. **There will be no hybrid portion of the June meeting.**
- Have you turned in your Raffle Quilt tickets yet? The drawing is at our June meeting so you have 1 more month to sell and get them turned in. Remember there is a 15% discount coupon to Capital Quilts on the back of the ticket stub.
- Many thanks to Liz Plantz who is now the new the editor of *The Quiltline*!

That's all from me. See you at the meeting.

Anne Flaggs  
Anne.f.flaggs@gmail.com



## Guild Meeting Minutes – April

Harriet Sheinson

7:30pm Anne Flaggs, President, welcomed everyone to the meeting. There were no guests or new members. The minutes of the March meeting were approved unanimously.

NeedleChasers Quilt Group was welcomed and showed off their beautiful raffle quilt. Their Quilt show is Oct. 10-11 in Kensington, MD.

The next Executive Board meeting will be on April 14 at 7pm via Zoom. Anne Flaggs welcomes suggestions and ideas for the guild any time. If you would like to attend the meeting, just contact Anne.

Joy Dorman has donated the 2026 Raffle quilt. We are looking for a custom longarm quilter to finish it. If you know of someone, please contact Anne. We still need ideas for a 2027 quilt.

The Nominating Committee for 2025-2026 officers indicated we still need someone for secretary and for vice president. Our fiscal year ends May 31. The By-Laws specifically state that an official announcement be made at the May meeting as to who has been nominated for the officer positions so the election can be held at the June meeting.

The Guild communicates with its membership through *The Quiltline* and the Listserve. Currently 20% of the members have not subscribed to the Listserve. You may have received an email from FSQ to help you sign up. Please note that email providers may block the Listserve and SignUpGenuis notifications so you may need to update your spam blocker to see these messages.

Next month our meeting will be held in the Hefner Auditorium at Asbury campus. This room has a stage and similar AV setup. Parking will be a bit more difficult as this is located near several of the buildings where residents live. We expect to be in Hefner for most of our meetings in the future. \*\*

**Update: the May & possibly the June meetings will be in the Rosborough community room\*\***

Our June meeting will be a potluck. We plan to start eating around 6:30 pm with time to socialize and then have a business meeting around 7:30 pm where we can elect a new board and have some year-end fun. More information will be coming in May. In the meantime, think about what you can bring to the dinner (appetizer, side dish, main dish, dessert). FSQ is thinking of buying some chicken to serve as a main dish. There will not be a hybrid portion to this meeting as we will be eating.

Anne reviewed the highlights of the Quiltline: There is lots of information there on the quilt show, including raffle basket needs, boutique, silent auction, yard sale, FSQ Challenge, and volunteering.

Service Projects meeting will be April 10 and 17, both on Thursday mornings from 9:30-noon at Fairhaven United Methodist Church.

The 2026 retreat is planned for Feb. 13-16 with signups beginning Aug. 1.

All those present said goodbye to the library and expressed many thanks to Rosie and Liz for heading our library since 2017.

## **The Quiltline – May 2025**

Membership dues will start being collected at the May meeting. There is a slight change in the procedure for returning members: if you renew in person, you don't need to complete a form anymore but will need to review the membership directory and OK your address/phone number/email for accuracy. If you renew through the mail, please send in the form that is available on the website. Dues are \$35 but if you live at Asbury or are out of state it's \$20.

We have 120 members at present.

### **Committee Reports and Announcements:**

Joanne DuChez announced that the Service Projects Challenge is "The Disappearing Block" and is due at the October meeting. The quilts should measure between 40" to twin-size.

Quilt Show co-chair, Trish McTighe requested that everyone present tell their friends to come to the show and to e-mail fliers.

Cathy Miller, chair of social media, told where she was putting information about the Show and asked everyone to hit their social media favorites to spread the announcement about the show.

Peggy Weidman reported that this meeting was the last chance to register for the Boutique.

Linda Belecki thanked the Silent Auction participants, we have over 100 quilts for sale.

Judy Walsh announced that she has been editing *The Quiltline* for 5 years and will be stepping down in June to do other things. Please volunteer for this very important position.

Carmen Contreras-Sesvold, Yard Sale chair, mentioned that donations can be brought to the Service Projects workshops in April. The price this year is \$5 a pound for fabric at the Yard Sale.

Anne Flaggs mentioned that volunteers are needed to make the show happen. She asked for more volunteers, mentioning that volunteering 4 hours or more makes you eligible for the volunteer basket. Husbands and family members will be needed to set up and take down the show. Sunday is the last day and only for four hours, so admission will be \$5.

Nicki Lynch mentioned that there was a freebie table in the back.

The program was presented by Elizabeth Lee from Capital Quilts. The presentation was a trunk show with an emphasis on her "playful portraits". The program was excellent and really enjoyed by all.

The winners of the fabric raffle were Peggy Weidman and Carol Carrier. The winners of the door prize were Marilyn Pierre and Mary Moore Payne.

The meeting was adjourned at 9:30pm.

Respectfully submitted,  
Harriet Sheinson, Corresponding Secretary



## Programs

Stacy Ross and Judy Walsh

Please join us in welcoming Mary Ann Bruce, Joyce Danzig and Ihsia Hu as the new co-chairs for the Programs Committee! They bring a lot of enthusiasm to their positions, and we know they will do a great job.

Our May 5<sup>th</sup> meeting will again be held in the Rosborough Center in the room where our quilt show was just held.

The final speaker of our business year will be Eliza Hardy Jones. She will share her [“Song Quilts”](#) project with us, which she created to visually interpret folk music from across the U.S and in Northwest Russia.

After recording the songs, Eliza created a notation method that translates pitch into color and rhythm into shape. It will be interesting to see what the songs “look like” as quilts!

In **June** our meeting will begin at 6:30 pm with a pot luck dinner. Look for a SignUpGenius list to indicate what you will bring to share.

About 7:30 pm we’ll have a short business meeting which will include the election of officers, drawings for the Quilt Show Volunteer Raffle Baskets, the FSQ Raffle Quilt and the Featherweight. We’ll round out the evening with Show & Tell.



## Airing of the Quilts

Cathy Miller

At the Oaks Quilt Show in September, I picked up a brochure called [Airing of the Quilts](#).

"The tradition of airing quilts is a longstanding custom embraced in mountainous and rural areas during the late spring season. With the onset of warmer weather following the winter chill, women seize the chance to rejuvenate and aerate these essential coverings. Over time, communities in small towns would set aside a specific spring day for the purpose of revitalizing and displaying family quilts, be it over fences, clotheslines, or along porch railings."

This year, the [Airing of the Quilts](#) in Palmerton, PA will take place on Sat. May 3, 2025 [rain or shine]. They expect to show over 500 quilts in the historic downtown area from 9:00am – 5:00pm.



## Service Projects Update

Nance Brennan and Anne Weaver

April brought flowers, warmer weather and lots and lots of deliveries! We kicked off the month with a delivery of **35 quilts** to Comfort Cases and, toward the middle of the month, we **took 95 pillowcases** to our contact at A Case for Smiles.

We're happy to be back at Shady Grove Hospital, where we delivered **40 preemie quilts and 67 baby hats**.

After a much-appreciated display at the recent quilt show, we have delivered **29 log cabin challenge quilts** to Project Linus. What a full month! Thanks to all who helped with their construction.

Please also join us, if you can, for our May Service Projects workshops on Thursday, May 15, and Thursday, May 22. We will be meeting from 9:30 am until noon at Fairhaven United Methodist Church, 12801 Darnestown Road (Route 28), a mile from Quince Orchard High School.

For more information, contact Nance Brennan or Anne Weaver. Thanks, as always, for your support.





## Where Did That Darn Block Go?

JoAnne DuChez

### THE DISAPPEARING BLOCK

#### SERVICE PROJECTS' 2025 SUMMER QUILT CHALLENGE

What do quilters do? They cut up fabric and sew the pieces together into blocks. This challenge adds one more dimension to that approach. Now you take that finished traditional block, slice it up, mix up the pieces and sew them back together in a different orientation. These new blocks may look much more intricate and nothing like the original block. You will be making your blocks disappear and become some other block. Is this confusing, or what?

The most common traditional blocks used for disappearing blocks are the 9- or 4 patch blocks. But many other blocks, such as pinwheels, windmills, hourglass, churns, may be used. Take a look on the Web or Pinterest and search for disappearing quilt blocks. You will be amazed! There are many tutorials that will walk you through how to make your block disappear.

Take the challenge and use up a lot of scraps or stash. You will be helping FSQ support our Service Projects mission to provide quilts to hospitals, Comfort Cases, Project Linus, A Wider Circle and other worthwhile organizations.

**Also, please make an additional original block to display with your final quilt.** It will be fun to figure out how you made that block disappear. Those additional blocks will also be donated to service projects for creating new quilts or kits.

Fabric bundles will be available at the May meeting. You may also select fabric bundles at the Service Projects Workshops beginning in April. If you'd rather, feel free to use fabric from your own stash.

**The quilt size may be 40" square to twin size.** Quilts must be sandwiched, quilted and bound. All challenge quilts will be donated to Service Projects for distribution.

**Finished quilts are due at the October meeting by 7:15 pm.** Voting will take place before the meeting and during the first 5 minutes of the break. Yard Sale Bucks will be awarded to the three quilts with the most votes.

We can't wait to see what your imaginative spirits create. Have fun!





## FSQ Quilt Show Update

Trish McTighe

The “Celebration of Quilts” show was held April 25-27 at Asbury Methodist Village in Gaithersburg. Preliminary and anecdotal reports indicate that it was a smash hit with FSQ members, Asbury residents, and other attendees. We heard and received many compliments about the amazing creativity and artistry on display. The quilts in the hallways and in the theater added interest and variety to the show. The yard sale drew many people down the hallways, and they kept coming back for more great fabric and sewing items. Fabulous raffle baskets were won by many in the guild and by other visitors.

We really came together as a guild to welcome our guests, celebrate our quilting accomplishments, and experience an enjoyable and fun event. **THANK YOU, THANK YOU** to the Quilt Show Committee Chairs and other volunteers who made this show run so smoothly!

Two “Thank You” raffle baskets will be drawn at the May meeting for volunteers who worked for four or more hours.

Attendance at the show was over 550. Of that number more than 130 Asbury residents enjoyed free admission at the show. In addition, there were several Asbury residents who entered through the hallway near the raffle baskets who didn’t make the count. Attendance was up from the 340 we had in 2023.

Reminder: Committee chairs please send your reports by May 15.

Trish McTighe  
Anne Flaggs





## Quilt Show Raffle Baskets & Quilt of Valor

Elaine Villforth and Heidi Oestreicher

Heidi and I wanted to thank all the people who contributed to the raffle basket success! You rock!

Thanks go to:

**Volunteers** -who helped set up (carrying the baskets into the main show room each night and carrying them back out each morning) and supported the ticket sales.

**Silent volunteers** -the people who came by and offered to help when we were running around trying to set up and take apart the displays.

**The Piece Makers** - who helped fill the baskets, came up with the basket themes, wrapped the baskets, help photograph, and named them.

**The FSQ mini groups** -who donated baskets (they were FANSTASTIC).

Piece Makers

Stashbusters

EQ7

**FSQ donors**- Not only did people donate content and quilt kits, but they also made items for the baskets. We are overwhelmed by everyone's generosity.

**Special thanks** go to Judy Walsh who not only helped out at the Quilt of Valor booth but made a bunch of squares. We are 50% complete.

I don't have the final numbers, but we made over \$1800 in sales.

Again,

Thank you !!!

Elaine and Heidi



## Quilt Show Silent Auction

Linda Belecki

THANK YOU to all who participated from our wonderful volunteers who helped set up our booth (which looked fabulous), those who sat at the table and helped our guests with their purchases and everyone who submitted something for sale. Your quilts and art quilts were just spectacular.

Also a big thank you to all those who just visited the Quilt Show. This year felt special, I heard many comments about how happy and friendly everyone was.

“Great Job Everyone!”

Linda Belecki

Chair, Silent Auction

## **FSQ Quilt Show – Viewer’s Choice Winners**

Congratulations to ALL of our members who submitted their amazing quilts to be displayed in our quilt show this year. I heard from countless people how difficult it was to place their votes for the Viewer’s Choice awards – there were simply so many lovely works of art from which to choose! But by the end of the day on Saturday over 200 votes had been cast, and the results were compiled. Here is the list of winners in each category.

### **Large Quilts**

		
<p>1<sup>st</sup> Place - Coralyn Colladay, "Grimwoirren's Pet"</p>	<p>2<sup>nd</sup> Place – Nancy Zachik, "Claire and Matt’s Wedding Quilt”</p>	<p>3<sup>rd</sup> Place – Susan H., “Visions”</p>

### **Medium Quilts**

		
<p>1<sup>st</sup> Place – JoAnn DuChes, “Ode to Africa”</p>	<p>2<sup>nd</sup> Place – Alison Luekefeld, “Colorwash I”</p>	<p>3<sup>rd</sup> Place – Karen Moss, “Cheetah Abstractions”</p>



Small Quilts



1<sup>st</sup> Place – Peggy Weidman, "Food for Thought"



2<sup>nd</sup> Place – Stacy Ross, "Burning Orange and Blue"






3<sup>rd</sup> Place (Tie) – Stacy Ross, "Yellow Lily"



3<sup>rd</sup> Place (Tie) – Lisa Wells, "Antique Lighthouse"



Miniature Quilts

		
<p>1<sup>st</sup> Place – Suma Glassman, “Blue Baby Beads”</p>	<p>2<sup>nd</sup> Place – Mary Ann Bruce, “My Paper Pieced Garden”</p>	<p>3<sup>rd</sup> Place – Barbara Skelly, “Make Mine a Mini”</p>

Other

		
<p>1<sup>st</sup> Place – Trish McTighe, “My Maryland Spring Beauty”</p>	<p>2<sup>nd</sup> Place – Alison Leukefeld, “Swimsuit Summer”</p>	<p>3<sup>rd</sup> Place – Gretchen Golas, “Blue Seed Packet Wall Hanging”</p>



## The Quiltline – May 2025

### Log Jam Challenge



1<sup>st</sup> Place – JoAnn DuChes, “Seahorses”

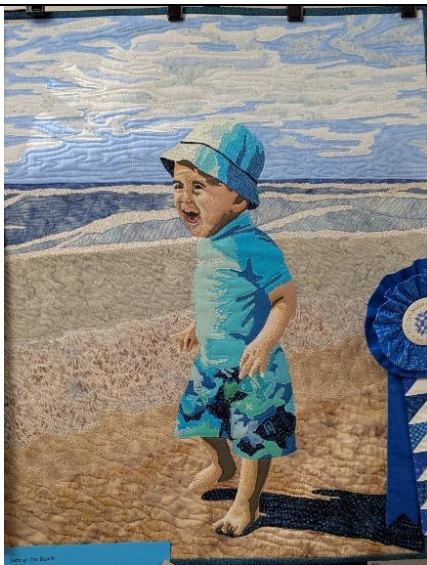


2<sup>nd</sup> Place – Mary Lou Dungan, “Blueberry Jam”



3<sup>rd</sup> Place – Barbara Skelly, “Log Jam Challenge”

### “Life’s a Beach” Guild Challenge



1<sup>st</sup> Place – Stacy Ross, “Sam at the Beach”



2<sup>nd</sup> Place – Peggy Weidman, “Run Girls Run!”



3<sup>rd</sup> Place – Lynn Stieber, “Secrets of the Sea”



## **Quilt Show Yard Sale**

Lorie Coston, Mary Ann Bruce and Carmen Contreras-Sesvold

### **Bargains Galore went out the Door at Asbury!**

We cannot thank you all enough for donating, volunteering and shopping at the 2025 Yard Sale. Our Friday numbers alone were through the roof! The hallway was a wonderful venue for the sale and allowed shoppers to focus on their task without much interruption. The \$5 per pound price helped move a lot of fabric out the door, along with the bargain bags you could fill with all kinds of goodies.

We hoped to sell out this year and just have empty bins leftover but that was not meant to be. We are doing our best to donate leftover fabric, panels, kits and patterns to worthy causes. Please send suggestions our way.

A huge thank you to Anne and Trish, who coordinated this show with such organization and calm demeanors. The show was set up beautifully and had such an energy to it!

Lastly, the current Yard Sale committee chairs are stepping down. We have run the sale for several years now and are ready to pass the baton forward. There are many files and notes we can share with the next committee chairs. Please call any of us if you would like to chat about the Yard Sale and what is required to run it.

Your Yard Sale Co-Chairs,

Mary Ann Bruce, Carmen Contreras-Sesvold, and Lorie Coston





## **FSQ Retreat**

Jennifer Rossmere and Colleen Biasco

# **FSQ Retreat - SAVE THE DATE**

We are already looking forward to the next FSQ Retreat which will be held from February 13-16, 2026 (President's Weekend). Please put this on your calendar now so that you will be able to join us.

Registration will begin on August 1, 2025. As this date gets closer, we will send out information about cost and how to register. The Retreat will again be held at the lovely Bon Secours Retreat & Conference Center in Marriottsville, MD.

If you have any questions at the moment, please email [retreats@friendshipstar.org](mailto:retreats@friendshipstar.org)

Jennifer Rossmere and Colleen Biasco, FSQ Retreat Co-chairs



## Facebook

Suma Glassman and Ellen Robinson

We have a Facebook Group in addition to our regular page on that platform. Please like the page and join the group. The group will allow you to share pictures of your work with other members. Both pages are public so you can still view them just by going to the links. We post various items of interest to both areas.

The regular Facebook page is located at <https://facebook.com/FriendshipStarQuilters/>.

The Facebook Group is at <https://www.facebook.com/groups/421870746339372>.

If you have any questions, you can contact either Ellen or Suma individually or send an email to [facebook@friendshipstar.org](mailto:facebook@friendshipstar.org).

## Quilt Block Exchange – An Invitation

We would love to invite you to join our group at Facebook group called “Quilt Block Exchange”. Our members have an array of block exchanges, project challenges, and skill building videos every month. The good part is we list all swaps for the full year, giving you ample time to decide what interests you the most.

Our group is unique because (like no other) we provide many selections and require minimum or maximum blocks for each exchange. Note: we have added an email address below if you have any further questions.

Lastly, we are building a group of like-minded quilters that want to enjoy and help to build our group. We thank you in advance and look forward to hearing from you soon.

<https://www.facebook.com/groups/917148325145277/?ref=share&mibextid=CTbP7E>

Sincerely,

Administrator: Larissa Veatch= [larissaveatch@gmail.com](mailto:larissaveatch@gmail.com)

Administrator: Norma Blackstone= [nj.stitches@gmail.com](mailto:nj.stitches@gmail.com)

Administrator: Cailin Jenkins



## Membership

Carrie Horton and Jan Drass

Our membership is currently 120 members.

We will continue to meet in person on May 5 at Asbury Methodist Village. The option to attend virtually is still available to those who would prefer that. Guests are welcome if space is available. Please let Membership know if you have a guest who would like to attend.

Our annual membership renewal starts at the May meeting. You must join or renew by the September meeting to have an entry in our annual Directory. If you are renewing your membership you can do that in person at any meeting, and no need to complete a form. You will need to verify your information on a paper copy of the directory to make sure your address, phone number, etc has not changed. We accept cash, credit card or check (payable to FSQ).

If you are new to FSQ, or renewing your membership by mail, please [fill out the form online by clicking here](#). Print the completed form and mail it with your membership fee to the address on the form, which is:

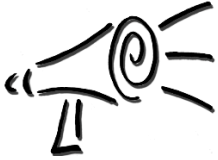
Carrie Horton  
FSQ Membership Co-Chair  
432 Girard St. Apt. 103  
Gaithersburg, MD 20877

Carrie Horton & Jan Drass  
Membership Co-Chairs

### Happy Birthday to our FSQ friends with May Birthdays:



Alline Myers	May 5	Ann Manyin	May 18
Ginny Leake	May 7	Trish McTighe	May 19
Amy McNamara	May 10	Laura Chaskes	May 20
Freddie Berg	May 13	Wendy Bauman	May 23
Jennifer Rossmere	May 13	Theresa Grate	May 23



## A True-Blue Quilt for a True-Blue President

Michele Barnard

Friends, our amazing President Anne Flaggs has requested simple blue and white blocks for her president's quilt. A tutorial is below.

I will also have some pre-sewn blocks available at our in-person spring meetings for people to pick up and sign.

ANY blue is acceptable. ANY white is also OK, although - since white-on-white can be difficult to write on - you might want to stick to plain white.

1. Cut a square of blue fabric at least 6 inches on each side and cut it in half diagonally.
2. Cut a strip of white 2 inches by 12 inches



3. Sew the blue triangles to the white strip, centering them on the white so there is some overhang as in the previous photo.

4. Trim the block to 6.5 inches square, centering the white strip.



5. Ta-dah! Your block is ready to sign and turn in!



If you have any questions, just contact me, Michele Barnard.



---

*ADMINS: LARISSA, NORMA AND CAILIN*

---

***WELCOME TO THE  
QUILT BLOCK  
EXCHANGE GROUP***

Do you enjoy a nice selection of  
Exchanges, making new friends and  
themed quilts with others? Please join  
the Quilt block exchange. where the fun  
begins

---



**EMAIL S**  
**NORMA NJ.STITCHES@GMAIL.COM**  
**LARISSA- LARISSAVEATCH@GMAIL.COM**





Elected Officers	
<a href="#"><u>President</u></a>	Anne Flaggs
<a href="#"><u>Vice President</u></a>	Michele Barnard
<a href="#"><u>Co-Treasurers</u></a>	Joy Dorman and DeVeda Powell
<a href="#"><u>Secretary</u></a>	Harriet Sheinson

Committee Chairs			
<a href="#"><u>Fabric of the Month</u></a>	Liz Plantz & Harriet Sheinson	<a href="#"><u>Raffle Quilt Ticket Sales</u></a>	Karen Moss
<a href="#"><u>Facebook</u></a>	Suma Glassman and Ellen Robinson	<a href="#"><u>Retreats</u></a>	Colleen Biasco and Jennifer Rossmere
<a href="#"><u>Membership</u></a>	Carrie Horton and Jan Drass	<a href="#"><u>Service Projects</u></a>	Nance Brennan and Anne Weaver
<a href="#"><u>Newsletter</u></a>	Judy Walsh	<a href="#"><u>Small Groups Coordinator</u></a>	Peggy Weidman
<a href="#"><u>Pins</u></a>	Linda Belecki	<a href="#"><u>Summer Challenge</u></a>	JoAnne DuChez, DeVeda Powell and Meg Tison
<a href="#"><u>Programs</u></a>	Stacy Ross and Judy Walsh	<a href="#"><u>Sunshine &amp; Shadows</u></a>	Ellen Robinson
<a href="#"><u>Publicity</u></a>	Michele Barnard	<a href="#"><u>Web Administrator</u></a>	Lorie Coston
<a href="#"><u>Quilt Show 2025</u></a>	Anne Flaggs and Trish McTighe	<a href="#"><u>Yard Sale</u></a>	Mary Ann Bruce, Lorie Coston and Carmen Contreras-Sesvold
<a href="#"><u>Raffle Quilt Marketer</u></a>	Maryjean Spencer	<a href="#"><u>Zoom Coordinator</u></a>	Kathy Swartz